

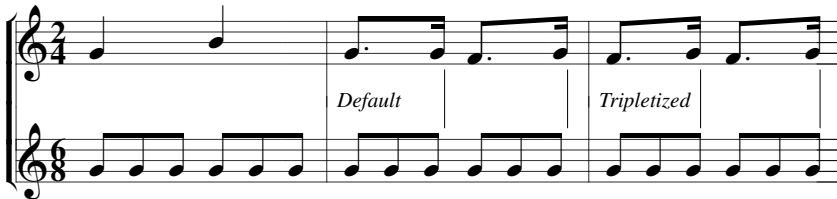
PMW Demonstration

This document is a demonstration of some of the fancy things that can be done using the PMW music typesetting program. It is generated from a single PMW input file, using multiple 'movements'. Other examples show longer extracts of real music.

Custom time signatures and old clefs



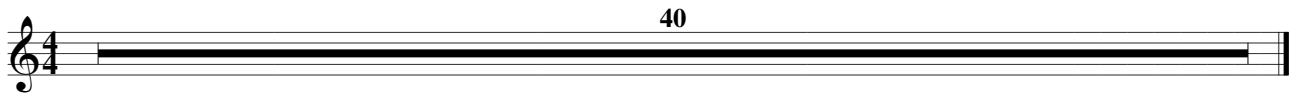
Mis-matched time signatures and tripletizing



Incipits and Ossia



Tacet



Ancient



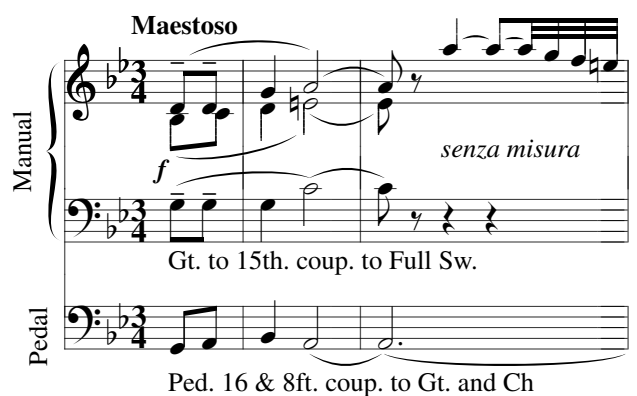
Modern



Gaps in slurs and lines



Two parts to a stave



Transposed notes and key/chord names

Guitar tablature

Noteheads etc

Slur control

Fancy notations

Text tricks and drawing

Normal Squashed **Stretched** *Slanted* Weird *Italic* **Bold** **Bold italic** Big SMALL CAPS Small

Sloping down Sloping up Vertical Vertical Upside-down



Scale practice must be maintained

Staff lines (up to 6 can be specified)

1. This is an example of a footnote, commonly used to discuss metronome markings. Footnotes are attached to a specific bar, as opposed to footings, which belong to a page.